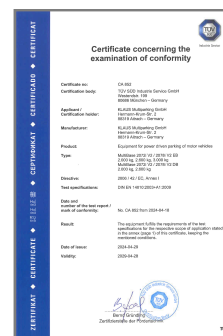




## PRODUCT DATA

DIMENSIONS, TECHNICAL INFORMATION AND PERFORMANCE SPECIFICATION

# multibase 2072i



## Table of contents

|   |   |  |    |
|---|---|--|----|
| Explanation of symbols.....                       | 2 | Access incline.....                          | 8  |
| Parking positions.....                            | 2 | Clearance for installations.....             | 8  |
| Dimensions and tolerances.....                    | 2 | CE conformity.....                           | 9  |
| Overview of building configuration.....           | 3 | Electrical installation.....                 | 10 |
| Vehicle data.....                                 | 3 | Technical information.....                   | 11 |
| Overview of system types and ceiling heights..... | 4 | Performance specification.....               | 12 |
| Width dimensions.....                             | 5 | Services to be provided by the customer..... | 13 |
| Width dimension with door.....                    | 5 | Subject to technical changes.....            | 13 |
| Width dimension without door.....                 | 6 |  |    |
| Loading schedule.....                             | 7 |  |    |

## Explanation of symbols



Platforms accessible horizontally.



max. load per parking space in kg.  
Upweighting over 2000 kg possible with surcharge (see "Vehicle data", page 3).



Disabled parking space  
Parking for persons with restricted mobility possible (see "Disabled parking space", page 11)



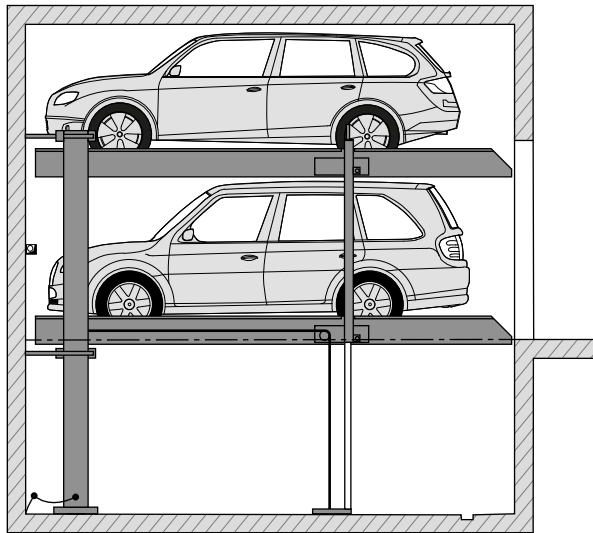
The systems provided are consistent with DIN EN 14010 and the EC Machinery Directive 2006/42/EC.



This system has also undergone a voluntary compliance test conducted by TÜV SÜD.

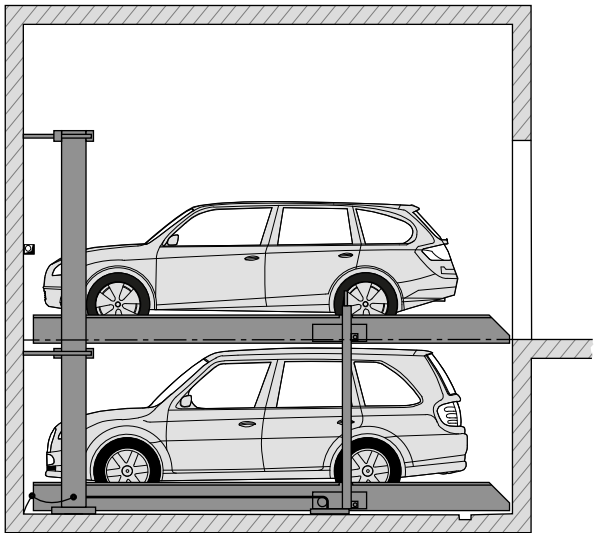
## Parking positions

### Lower parking space



The lower vehicle can park in or leave the parking space.

### Upper parking space



The upper vehicle can park in or leave the parking space.

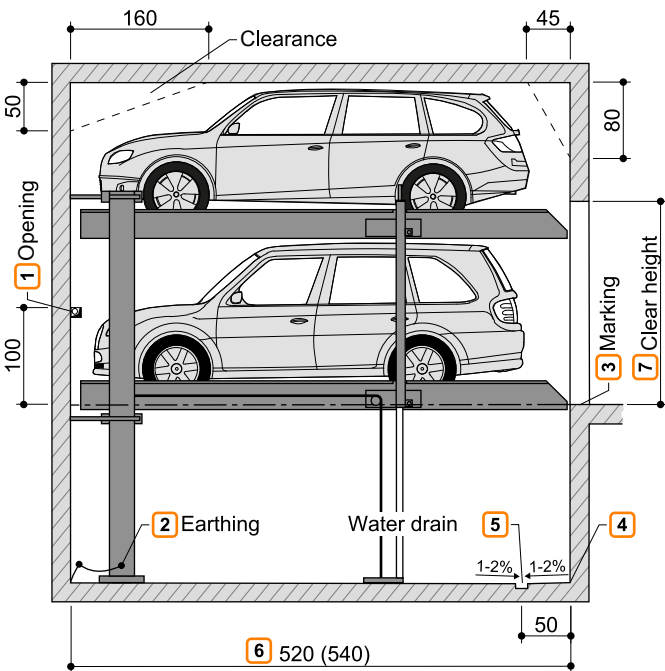
## Dimensions and tolerances



All dimensions and minimum final dimensions.  
Tolerance for dimensions +3/-0. Dimensions in cm.  
In order to adhere to the minimum final dimensions, the tolerances in accordance with the German Construction Tendering and Contract Regulations [VOB], Part C (DIN 18330 and 18331) and DIN 18202 must also be taken into account.

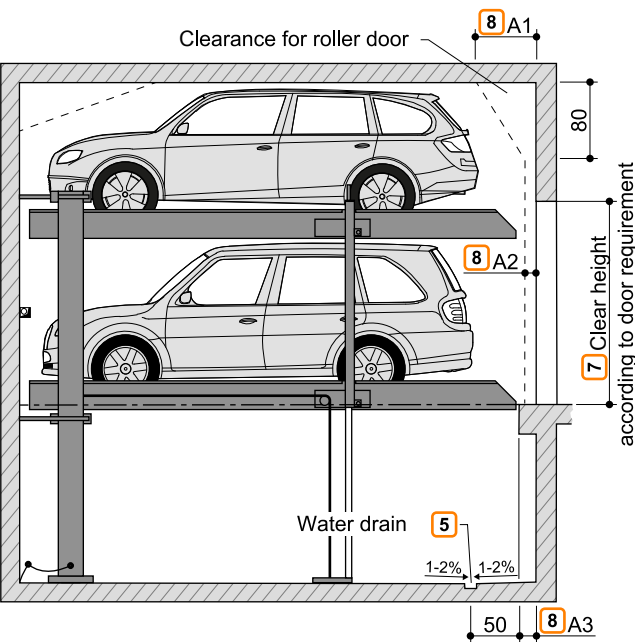
# Overview of building configuration

## Building configuration without door



- 1 If there are dividing walls: Wall opening 10 x 10 cm.
- 2 Equipotential bonding from the foundation earth connection to the system (on site).
- 3 In accordance with DIN EN 14010, the customer must provide 10 cm wide, yellow/black marking in accordance with DIN ISO 3864 in the access area along the edge of the pit to identify the hazard area. (see "Loading schedule", page 7).
- 4 No fillets/haunches are permitted at the transition from the pit floor to the walls. If fillets/haunches are required, the systems must be narrower or the pits wider.

## Building configuration with door



- 5 Slope with water collection channel (see "Drainage", page 13).
- 6 ■ 520 cm for vehicles up to 5.0 m long  
■ 540 cm for vehicles up to 5.2 m long  
Shorter versions are possible on request - observe local regulations on parking space lengths.  
We recommend a pit length of 540 cm. for comfortable use of your parking space and increasingly longer vehicles.
- 7 Clear height in accordance with local regulations. Maximum vehicle height + 10 cm.
- 8 Dimensions A1, A2 and A3 must be agreed on-site with the door manufacturer.

# Vehicle data

## Version

SP (single platform) = 2 vehicles  
DP (double platform) = 4 vehicles

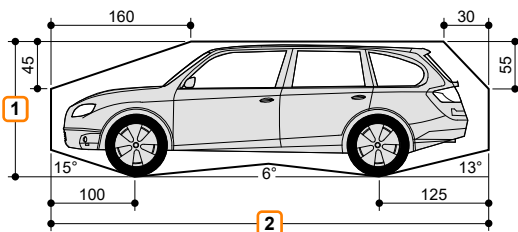
## Parking options

Series vehicles:  
saloon, estate, SUV, van in accordance with clearance gauge and maximum parking space load.

|            | SP      |         |         | DP      |         |
|------------|---------|---------|---------|---------|---------|
| Weight     | 2000 kg | 2600 kg | 3000 kg | 2000 kg | 2600 kg |
| Wheel load | 500 kg  | 650 kg  | 750 kg  | 500 kg  | 650 kg  |

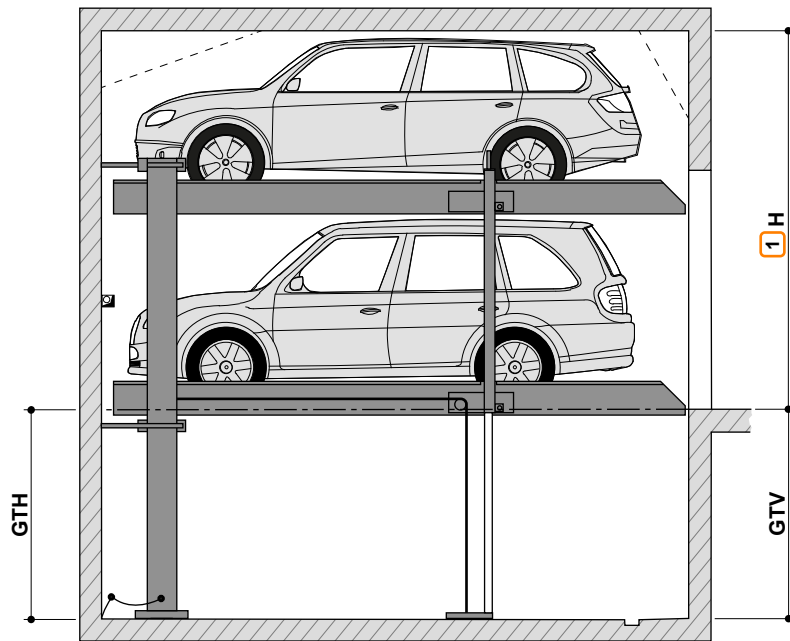
- 1 Vehicle height (see "Overview of system types and ceiling heights", page 4)
- 2 Vehicle length (see "Overview of building configuration", page 3)

## Clearance gauge



Vehicle width 190 cm with platform width 230 cm.  
Correspondingly wider vehicles can be parked with wider platforms.

## Overview of system types and ceiling heights



H: Ceiling height  
 GTV: Pit depth, front  
 GTH: Pit depth, rear

1 If the ceiling is higher, correspondingly higher vehicles can be parked on the top.

| Type      | GTH | GTV | Vehicle height, lower | Vehicle height, upper |     |     |     |     |     |     |     |     |     |     |     |     |     |
|-----------|-----|-----|-----------------------|-----------------------|-----|-----|-----|-----|-----|-----|-----|-----|-----|-----|-----|-----|-----|
|           |     |     |                       | 150                   | 155 | 160 | 165 | 170 | 175 | 180 | 185 | 190 | 195 | 200 | 205 | 210 | 215 |
| 2072i-165 | 165 | 170 | 150                   | 320                   | 325 | 330 | 335 | 340 | 345 | 350 | 355 | 360 | 365 | 370 | 375 | 380 | 385 |
| 2072i-170 | 170 | 175 | 155                   | 325                   | 330 | 335 | 340 | 345 | 350 | 355 | 360 | 365 | 370 | 375 | 380 | 385 | 390 |
| 2072i-175 | 175 | 180 | 160                   | 330                   | 335 | 340 | 345 | 350 | 355 | 360 | 365 | 370 | 375 | 380 | 385 | 390 | 395 |
| 2072i-180 | 180 | 185 | 165                   | 335                   | 340 | 345 | 350 | 355 | 360 | 365 | 370 | 375 | 380 | 385 | 390 | 395 | 400 |
| 2072i-185 | 185 | 190 | 170                   | 340                   | 345 | 350 | 355 | 360 | 365 | 370 | 375 | 380 | 385 | 390 | 395 | 400 | 405 |
| 2072i-190 | 190 | 195 | 175                   | 345                   | 350 | 355 | 360 | 365 | 370 | 375 | 380 | 385 | 390 | 395 | 400 | 405 | 410 |
| 2072i-195 | 195 | 200 | 180                   | 350                   | 355 | 360 | 365 | 370 | 375 | 380 | 385 | 390 | 395 | 400 | 405 | 410 | 415 |
| 2072i-205 | 205 | 210 | 190                   | 360                   | 365 | 370 | 375 | 380 | 385 | 390 | 395 | 400 | 405 | 410 | 415 | 420 | 425 |
| 2072i-215 | 215 | 220 | 200                   | 370                   | 375 | 380 | 385 | 390 | 395 | 400 | 405 | 410 | 415 | 420 | 425 | 430 | 435 |
| 2072i-220 | 220 | 225 | 205                   | 375                   | 380 | 385 | 390 | 395 | 400 | 405 | 410 | 415 | 420 | 425 | 430 | 435 | 440 |
| 2072i-230 | 230 | 235 | 215                   | 385                   | 390 | 395 | 400 | 405 | 410 | 415 | 420 | 425 | 430 | 435 | 440 | 445 | 450 |

H - Ceiling height

H - Ceiling height

### Example configuration



Example: Vehicle height, lower 160 cm and vehicle height, upper 190 cm.

Type: 2072i - 175

Ceiling height: 370 cm

| Type      | GTH | GTV | Vehicle height, lower | Vehicle height, upper |     |     |     |     |     |     |     |     |     |     |     |     |     |
|-----------|-----|-----|-----------------------|-----------------------|-----|-----|-----|-----|-----|-----|-----|-----|-----|-----|-----|-----|-----|
|           |     |     |                       | 150                   | 155 | 160 | 165 | 170 | 175 | 180 | 185 | 190 | 195 | 200 | 205 | 210 | 215 |
| 2072i-165 | 165 | 170 | 150                   | 320                   | 325 | 330 | 335 | 340 | 345 | 350 | 355 | 360 | 365 | 370 | 375 | 380 | 385 |
| 2072i-170 | 170 | 175 | 155                   | 325                   | 330 | 335 | 340 | 345 | 350 | 355 | 360 | 365 | 370 | 375 | 380 | 385 | 390 |
| 2072i-175 | 175 | 180 | 160                   | 330                   | 335 | 340 | 345 | 350 | 355 | 360 | 365 | 370 | 375 | 380 | 385 | 390 | 395 |
| 2072i-180 | 180 | 185 | 165                   | 335                   | 340 | 345 | 350 | 355 | 360 | 365 | 370 | 375 | 380 | 385 | 390 | 395 | 400 |

H

Width dimensions

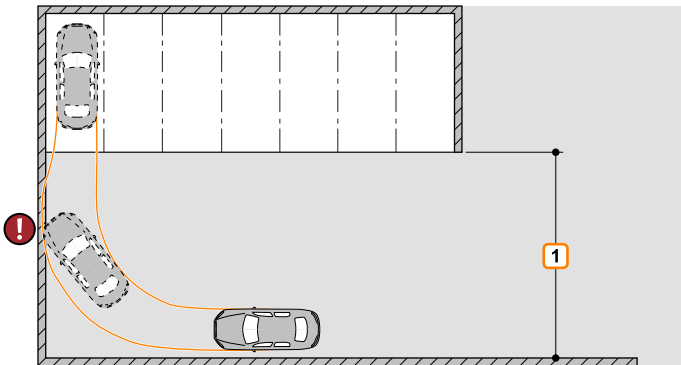


We recommend platform widths of minimum 250 cm and driving lane widths of 650 cm in order that vehicles can comfortably access the Multiparking system and enter and leave without difficulty.

Narrower platforms may impede parking according to the following criteria.

- Driving lane width
- Entrance conditions
- Vehicle dimensions

1 Observe minimum driving lane width in accordance with local regulations.



Width dimension with door

| Single platform - SP       |                      |                  | Double platform - DP |                      |                  |
|----------------------------|----------------------|------------------|----------------------|----------------------|------------------|
| Support outside of the pit |                      |                  |                      |                      |                  |
|                            |                      |                  |                      |                      |                  |
|                            | Clear platform width | Passage width B6 |                      | Clear platform width | Passage width B6 |
| SP                         | 230                  | 230              | DP                   | 460                  | 460              |
|                            | 240                  | 240              |                      | 470                  | 470              |
|                            | 250                  | 250              |                      | 480                  | 480              |
|                            | 260                  | 260              |                      | 490                  | 490              |
|                            | 270                  | 270              |                      | 500                  | 500              |
|                            | 350 2                | 350              |                      | 510                  | 510              |
|                            |                      |                  |                      | 520                  | 520              |
|                            |                      |                  |                      | 530                  | 530              |
|                            |                      |                  |                      | 540                  | 540              |

1 Door section (dimension A3 must be agreed on-site with the door manufacturer). With lateral closing doors, coordination between the door manufacturer and KLAUS Multiparking is required.

2 Disabled parking space version

## Width dimension without door

|                            | Single platform - SP | Double platform - DP | Example combination              |     |  |     |
|----------------------------|----------------------|----------------------|----------------------------------|-----|--|-----|
| Dividing walls             |                      |                      |                                  |     |  |     |
| Support in the pit         |                      |                      |                                  |     |  |     |
| Support outside of the pit |                      |                      |                                  |     |  |     |
|                            | Clear platform width | Dividing walls<br>B1 | Support in the pit<br>B2      B3 |     | Support outside of the pit<br>B4      B5 |     |
| SP                         | 230                  | 260                  | 255                              | 245 | 250                                      | 240 |
|                            | 240                  | 270                  | 265                              | 255 | 260                                      | 250 |
|                            | 250                  | 280                  | 275                              | 265 | 270                                      | 260 |
|                            | 260                  | 290                  | 285                              | 275 | 280                                      | 270 |
|                            | 270                  | 300                  | 295                              | 285 | 290                                      | 280 |
|                            | 350 <sup>1</sup>     | 380                  | 375                              | 365 | 370                                      | 360 |
| DP                         | 460                  | 490                  | 485                              | 475 | 480                                      | 470 |
|                            | 470                  | 500                  | 495                              | 485 | 490                                      | 480 |
|                            | 480                  | 510                  | 505                              | 495 | 500                                      | 490 |
|                            | 490                  | 520                  | 515                              | 505 | 510                                      | 500 |
|                            | 500                  | 530                  | 525                              | 515 | 520                                      | 510 |
|                            | 510                  | 540                  | 535                              | 525 | 530                                      | 520 |
|                            | 520                  | 550                  | 545                              | 535 | 540                                      | 530 |
|                            | 530                  | 560                  | 555                              | 545 | 550                                      | 540 |
|                            | 540                  | 570                  | 565                              | 555 | 560                                      | 550 |
| Combination                | 230 + 460            | 750                  | 745                              | 735 | 740                                      | 730 |
|                            | 240 + 470            | 770                  | 765                              | 755 | 760                                      | 750 |
|                            | 250 + 480            | 790                  | 785                              | 775 | 780                                      | 770 |
|                            | 250 + 500            | 810                  | 805                              | 795 | 800                                      | 790 |
|                            | 270 + 500            | 830                  | 825                              | 815 | 820                                      | 810 |
|                            | 270 + 510            | 840                  | 835                              | 825 | 830                                      | 820 |
|                            | 270 + 520            | 850                  | 845                              | 835 | 840                                      | 830 |
|                            | 270 + 530            | 860                  | 855                              | 845 | 850                                      | 840 |
|                            | 270 + 540            | 870                  | 865                              | 855 | 860                                      | 850 |

<sup>1</sup> Disabled parking space version

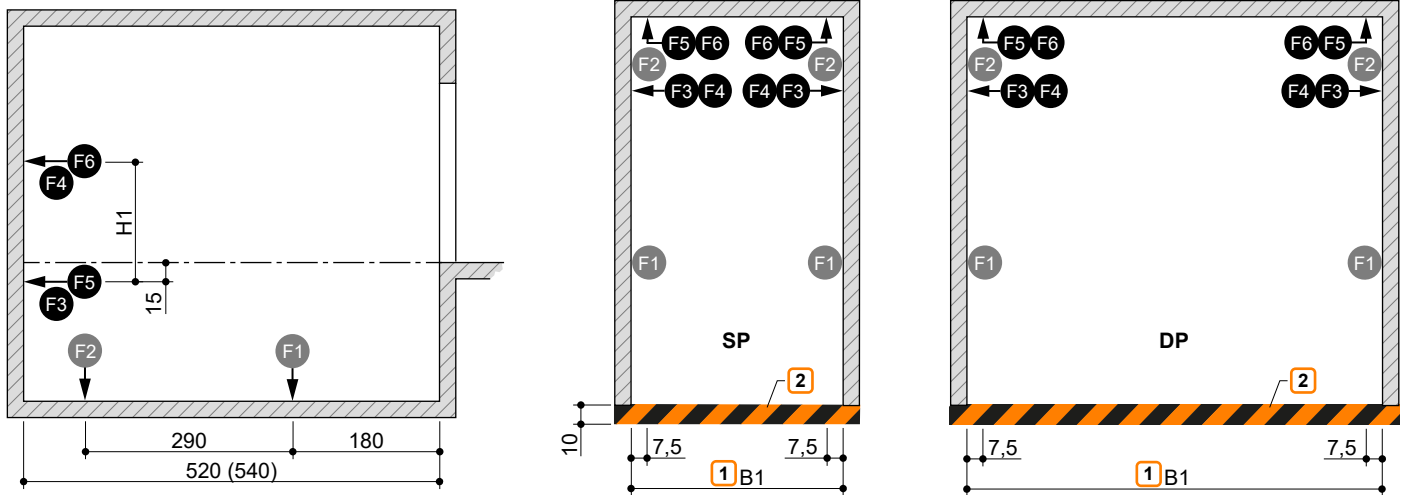
## Loading schedule



The systems are dowelled into the ground. The depth of the boreholes in the floor plate is approximately 15 cm, and approximately 12 cm in the walls.

The floor plate and walls below entrance level must be from concrete (concrete quality min. C20/25).

The dimensions for the bearing points have been rounded. If the precise figures are required, please consult KLAUS Multiparking.



1 Width dimension B1 (see "Width dimension without door", page 6)

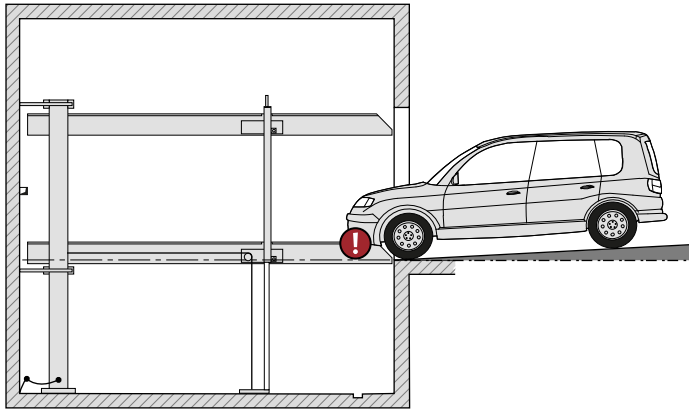
2 Marking in accordance with DIN ISO 3864 (illustration colour not consistent with DIN ISO 3864)

| Parking space load |         | F1                     | F2        | F3       | F4       | F5       | F6       | Type      | H1  |
|--------------------|---------|------------------------|-----------|----------|----------|----------|----------|-----------|-----|
| SP                 | 2000 kg | + 33.2 kN<br>- 5.4 kN  | + 12.5 kN | ± 1.3 kN | ± 0.7 kN | + 4.4 kN | - 2.5 kN | 2072i-165 | 195 |
|                    | 2600 kg | + 40.7 kN<br>- 6.6 kN  | + 15.1 kN | ± 1.6 kN | ± 0.9 kN | + 5.5 kN | - 3.1 kN | 2072i-170 | 200 |
|                    | 3000 kg | + 45.7 kN<br>- 7.4 kN  | + 16.9 kN | ± 1.9 kN | ± 1.0 kN | + 6.3 kN | - 3.5 kN | 2072i-175 | 205 |
|                    |         |                        |           |          |          |          |          | 2072i-180 | 210 |
| DP                 | 2000 kg | + 60.8 kN<br>- 9.2 kN  | + 20.6 kN | ± 2.4 kN | ± 3.1 kN | + 6.0 kN | - 4.4 kN | 2072i-185 | 215 |
|                    |         |                        |           |          |          |          |          | 2072i-190 | 220 |
|                    |         |                        |           |          |          |          |          | 2072i-195 | 225 |
|                    |         |                        |           |          |          |          |          | 2072i-205 | 235 |
|                    | 2600 kg | + 73.9 kN<br>- 11.2 kN | + 25.2 kN | ± 3.1 kN | ± 3.9 kN | + 7.4 kN | - 5.4 kN | 2072i-215 | 245 |
|                    |         |                        |           |          |          |          |          | 2072i-220 | 250 |
|                    |         |                        |           |          |          |          |          | 2072i-230 | 260 |

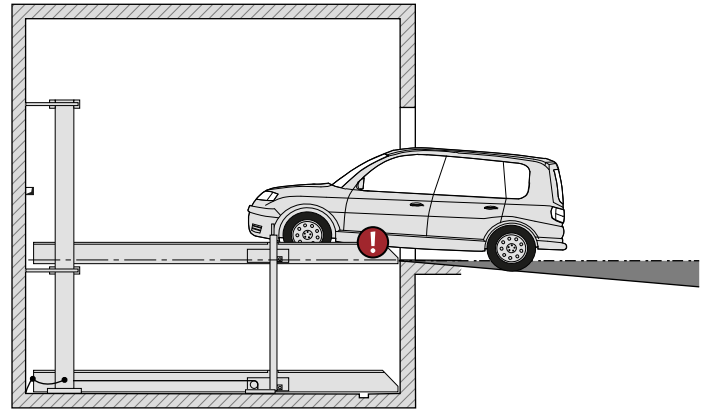
## Access incline



The maximum access inclines specified in the symbol sketch must not be exceeded. Improper configuration can lead to extreme difficulty accessing the system, for which KLAUS Multiparking cannot be held liable.



max. 3% slope

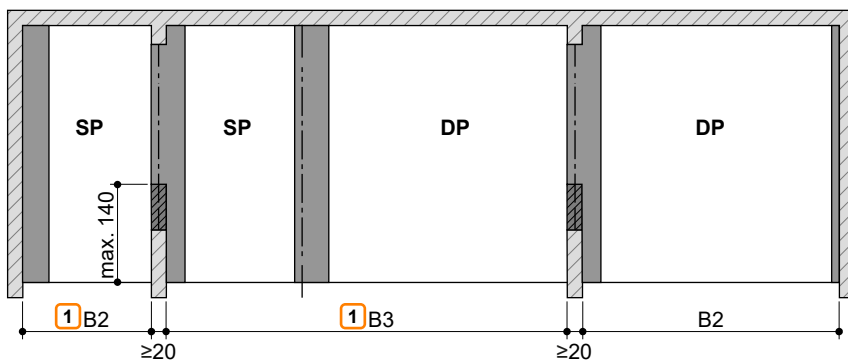
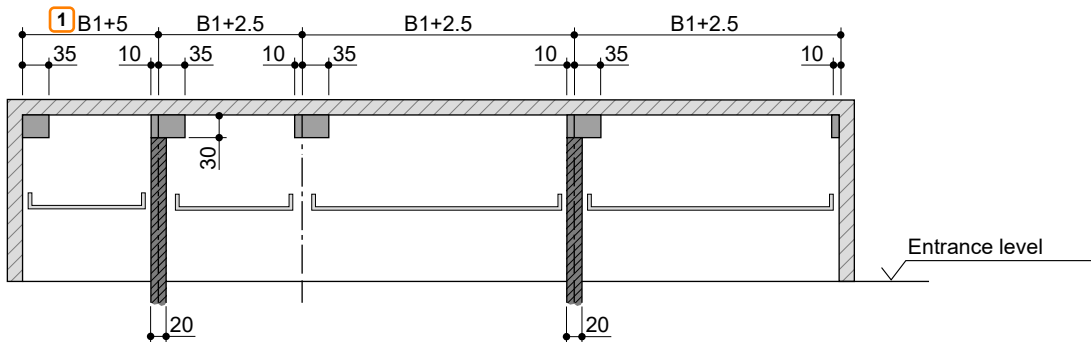


max. 10% gradient

## Clearance for installations



These clearances apply to vehicles parked forwards only, with exit on the left. The clearances must be adjusted for vehicles with exit on the right or parked in reverse.



① Dimensions B1, B2 and B3 (see "Width dimension without door", page 6)

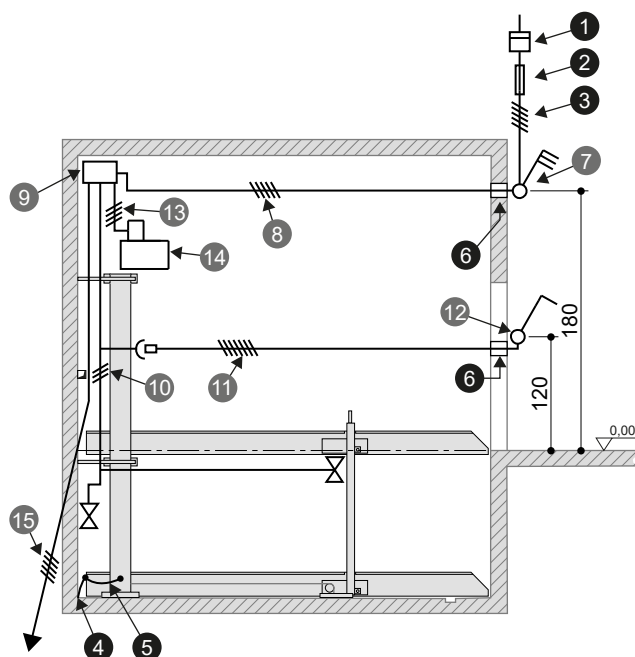
- Clearance for lengthways cable routing
- Clearance for vertical pipes, air ducts, etc.





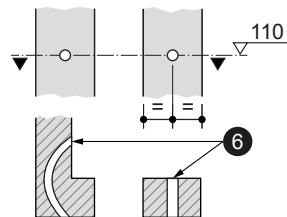
## Electrical installation

### Electrical installation diagram

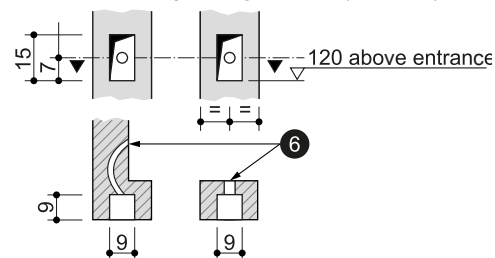


### On-site facilities for operating element

#### Surface-mounted operating element



#### Flush-mounted operating element (standard)



### Electrical specifications (services to be provided by the customer)

| Nr. | Quantity   | Designation  | Position            | Frequency          |
|-----|------------|--|---------------------|--------------------|
| 1   | 1          | Power meter  | in the supply cable |                    |
| 2   | 1          | Pre-fuse:  |                     |                    |
|     |            | 3x safety fuse 16 A (slow-blow) or<br>Circuit breaker 3x 16 A (trip characteristic K or C)       | in the supply cable | 1x per 3.0 kW unit |
|     |            | 3x safety fuse 20 A (slow-blow) or<br>Circuit breaker 3x 20 A (trip characteristic K or C)       | in the supply cable | 1x per 5.2 kW unit |
| 3   | 1          | Supply cable 5 x 2.5 mm <sup>2</sup> (3 PH+N+PE) with marked wires and protective earth          | to master switch    | 1x per 3.0 kW unit |
|     |            | Supply cable 5 x 4.0 mm <sup>2</sup> (3 PH+N+PE) with marked wires and protective earth          | to master switch    | 1x per 5.2 kW unit |
| 4   | every 10 m | Foundation earth connection  | Corner of pit floor |                    |
| 5   | 1          | Equipotential bonding in accordance with DIN EN 60204 from foundation earth connection to system |                     | 1x per unit        |
| 6   | 2          | Empty pipe EN 25 (M25)   |                     |                    |

### Electrical specifications (KLAUS Multiparking scope of supply)

| Nr. | Designation   |
|-----|---|
| 7   | Lockable master switch  |
| 8   | Supply cable 5 x 2.5 mm <sup>2</sup> (3 PH+N+PE) with marked wires and protective earth / Supply cable 5 x 4.0 mm <sup>2</sup> (3 PH+N+PE) with marked wires and protective earth |
| 9   | Unit switch cabinet   |
| 10  | Multiparker cable harness   |
| 11  | Connecting cable (operating element)  |
| 12  | Operating element   |
| 13  | Control cable 4 x 2.5 mm <sup>2</sup> with marked wires and protective earth  |
| 14  | Hydraulic unit 3.0 kW/5.2 kW, three-phase current 230/400 V / 50 Hz <sup>1</sup>  |
| 15  | Connecting cable to next system   |

<sup>1</sup> 5.2 kW unit for 2072i 2600 kg DP only

## Technical information

### Usage area

The system is suitable for a fixed group of users as standard. Where users change - in the upper parking spaces only - (e.g. short-term parking in office buildings or hotels), structural modifications to the Multiparking system are required. Please request a consultation if required.

### Disabled parking space

Disabled parking space version in accordance with recommendation DIN 18040 (Barrier-free Construction - Design Principles) with the following specifications:

- Platform width 350 cm
- Platform accessible horizontally (1° incline)
- AluLongLife platform profile
- Key blocking operating element

Note: AluLongLife on the upper platform ensures better accessibility for wheelchairs. When the operating element with key blocking is used, the key can only be removed when the system has been lowered. This ensures that the upper parking space is always ready for access.

### Units

Low-noise, bearing-mounted hydraulic units are installed on rubber-metal blocks. Consequently, we recommend separating the garage body from the residential building.

### Ambient conditions

Ambient conditions for the areas around Multiparking systems: Temperature range -20 to +40° C. Relative humidity 50 % for a maximum outside temperature of +40° C. If ascent/descent times are specified, these relate to an ambient temperature of +10° C and with the system positioned immediately adjacent to the hydraulic unit. These times are increased at lower temperatures or with longer hydraulic lines.

### Building application documents

Multiparking systems generally require approval. Please observe local regulations and stipulations.

### Care

To prevent corrosion damage, please observe our special cleaning and care instructions and ensure that your garage is well ventilated.

### Corrosion protection

In accordance with the 'Corrosion protection' supplement.

### Railings

If the permissible fall opening is exceeded, railings must be installed on the systems. If there are roadways immediately adjacent to or behind the systems, the customer must provide barriers in accordance with DIN EN ISO 13857. This also applies during the construction stage.

### Noise protection

#### Standard noise protection:

In accordance with DIN 4109-1 Noise protection in high-rise - Section 9: Maximum sound pressure level in living and sleeping areas 30 dB (A). User noise is not subject to the requirements.

The following dimensions are required for adherence to this value:

- Noise protection package in accordance with quote/order (KLAUS Multiparking)
- Sound insulation dimension of the building structure of min. R'w = 57 dB (service to be provided by the customer)

#### Increased sound protection (special agreement):

In accordance with DIN 4109-5 Increased noise protection in high-rise - Section 8:

Maximum sound pressure level in living and sleeping areas 25 dB (A). User noise is not subject to the requirements.

The following dimensions are required for adherence to this value:

- Noise protection package in accordance with quote/order (KLAUS Multiparking)
- Sound insulation dimension of the building structure of min. R'w = 62 dB (service to be provided by the customer)

#### Note:

User noise is noise that can be influenced individually by the user of our Multiparking systems. This includes, e.g., accessing the platform, the slamming of vehicle doors, engine and brake noise.

## Performance specification

### Description

Multiparking system for independent parking of 2 vehicles (single platform - SP), 2x 2 vehicles (double platform - DP) one on top of the other.

Dimensions in accordance with the underlying pit, width and height dimensions.

The parking spaces are accessed horizontally and have a slope of  $\pm 1^\circ$  for proper drainage of the platforms.

Special configuration of the lift and support structure prevents hindrance to door opening.

Vehicle positioning in any parking space by positioning aid mounted on one side (to be adjusted in accordance with the operating instructions).

Control via an operating element with automatic reset by means of simultaneous key.

Operating element usually installed in front of the support or on the outside of the door reveal.

Concise instructions at each operating point.

Special dimensions must be observed in buildings with door.

### Multiparking system comprising:

- 2 columns (secured to the floor)
- 2 sliders (with sliding guides secured to the columns)
- 2 platforms
- 1 electrical/hydraulic synchronisation system (for synchronised operation of the hydraulic cylinders when lifting and lowering)
- 2 hydraulic cylinders
- 2 rigid supports (platform connection)
- 2 chains and chain diversion wheels
- Dowels, screws, connectors, bolts, etc.
- The platforms are continuously accessible.

### Platforms comprising:

- Platform profiles
- Adjustable positioning aid
- Chamfered ramps
- Side beams
- Centre beam (DP only)
- Crossbeams (DP long and short crossbeams)
- Railings (on the upper and lower platform - if required)
- Screws, nuts, washers, spacers, etc.

### Hydraulic system comprising:

- Hydraulic cylinders
- Magnetic valves
- Hydraulic lines
- Bolted connections
- High-pressure hoses
- Attachments

### Electrical system comprising:

- Operating element (emergency-stop, key, 1 simultaneous key per parking space)
- Control device with cable harness and sensors

### Hydraulic unit comprising:

- Hydraulic unit (low-noise, fitted to bracket and bearing mounted on rubber-metal block)
- Hydraulic oil tank
- Oil filling
- Internal gear pump
- Pump holder
- Coupling
- Three-phase motor
- Noise protection, motor protection switch and control fuse
- Test pressure gauge
- Pressure relief valve
- Hydraulic hoses (to attenuate noise transmission to the hydraulic pipes)

## Services to be provided by the customer

### Barriers

Barriers that may be required in accordance with DIN EN ISO 13857 to secure the pits where there are roadways immediately in front of, adjacent to or behind the systems. This also applies during the construction stage. Railings on the systems, where required, are included as standard.

### Parking space numbering

Parking space numbering, if required.

### Building services systems

Any lighting, ventilation, fire-extinguishing and fire-alarm systems that may be required, plus clarification and compliance with corresponding official documentation.

### Lighting

The customer must observe local regulations pertaining to the illumination of parking spaces and roadways. In accordance with DIN EN 12464-1 'Light and lighting - Lighting of work places', an illumination level of min. 200 lx is recommended for the parking spaces and operating area of the system.

### Drainage

Functional drainage of the pit must be provided by means of, for example, a water collection channel towards the front that is connected to the sewer system or a pump sump. The channel may contain a lateral slope, but not in the other pit areas (lengthways slope is already provided by the building dimensions). In the interests of environmental protection, we recommend coating the pit floor. Oil and/or fuel separators should be installed in accordance with local regulations.

### Strip foundations

Due to structural conditions, the customer must erect an accessible platform when constructing strip foundations, level with the upper edge of the strip foundation.

### Warning marking

In accordance with DIN EN 14010, the customer must provide 10 cm wide, yellow/black marking in accordance with DIN ISO 3864 in the access area along the edge of the pit to identify the hazard area.

### Wall openings

Any wall openings that may be required should be in accordance with the sectional drawings (see *"Overview of building configuration", page 3*).

### Supply cable to master switch - foundation earth

The customer must lay the supply cable to the master switch during assembly. Functional capability can be checked by our engineers on site, in conjunction with the electronics engineer. If this is not possible during assembly for reasons attributable to the customer, the customer must commission an electronics engineer.

The customer must earth the steel structure with a foundation earth connection (earthing distance max. 10 m) and equipotential bonding in accordance with DIN EN 60204.

### Operating element

Empty conduits and recesses for the operating element (see *"Electrical installation", page 10*). Consultation with KLAUS Multiparking is required when using folding doors.

## Subject to technical changes

In the course of technical progress, KLAUS Multiparking shall be entitled to use newer or different technologies, systems, processes or standards to provide the services than initially offered, provided that this does not disadvantage the customer in any way.

### KLAUS Multiparking GmbH

Hermann-Krum-Straße 2  
 88319 Aitrach / Germany

☎ +49 (0) 7565 508-0

info@multiparking.com  
 www.multiparking.com

